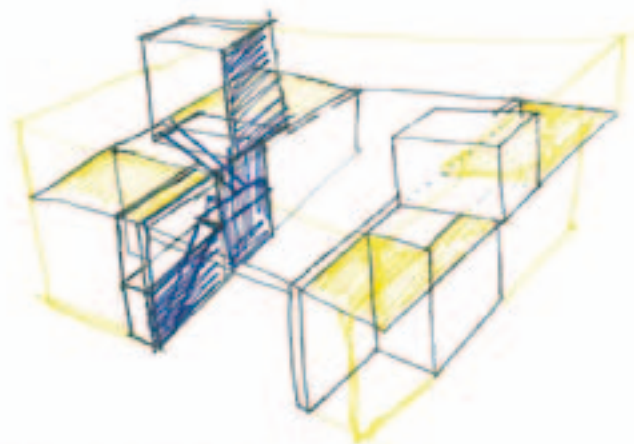


Maintenance Depot Lenzburg, Assimilation and Expansion

Husstein & Partner

Location	Lenzburg, Switzerland
Completion	2009
Client	Canton Aargau – department of public works, Departement Bau, Verkehr und Umwelt
Type of use	Office, Industrial
Gross floor area	889 m ²
Concrete used	Recycled concrete
Photos	Roger Frei

The expansion consists of a hybrid structure made of concrete and prefabricated timber elements. The design was based on the layout of the existing hall, the location on the street and the views of the church and the castle. The new building elements are harmoniously combined with the open hall. Based on the different uses, there are two main areas. Arranging the office space above the existing wash area improves the communication between the two areas. The common, fiber-like façade gives the building a new appearance. The industrial steel and fiber cover is accentuated by the hard, rough concrete sections and stands in strong contrast to the materials of the office spaces.



↑ Concept sketch concrete structure
↓ Street view with washing station



↑ Detail façade with entrance
→ Entrance area with window towards washing station





↑ Interior view reception area

↓ Mezzanine floor with view towards washing station

→ Staircase

